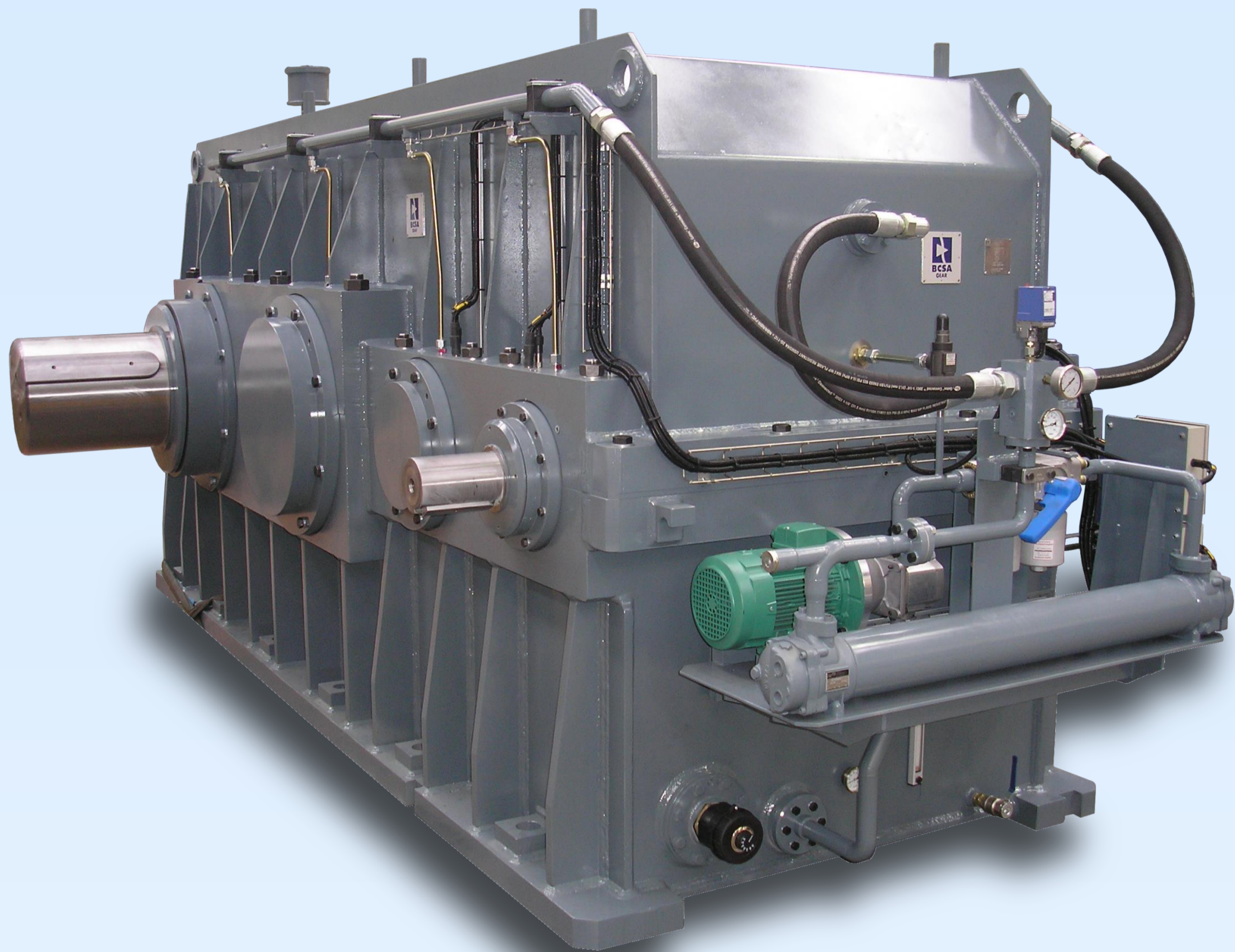


# Gearbox for rotary kiln in a cement plant

935 kW, 10.20 rpm, 872 850 Nm



- Replacement unit gearbox, 100% interchangeable without any interfaces modifications
- Embedded lubrication unit
- Build to last, design life time over 100 000 hours
- Outdoor location in a dusty environment and high ambient temperature

Puissance

**935 kW**

Power

Vitesse d'entrée

**1 000 rpm**

Input Speed

Vitesse de sortie

**10.20 rpm**

Output Speed

Couple max

**87 285 m.daN**

Maximum Torque

Poids

**26 t**

Weight

KR 4484



## Gearbox for rotary kiln drive *Réducteur d'entraînement de four rotatif*

ULS 2500 P

[www.bcsa.fr](http://www.bcsa.fr)

ISO 9001:2008  
BUREAU VERITAS  
Certification

