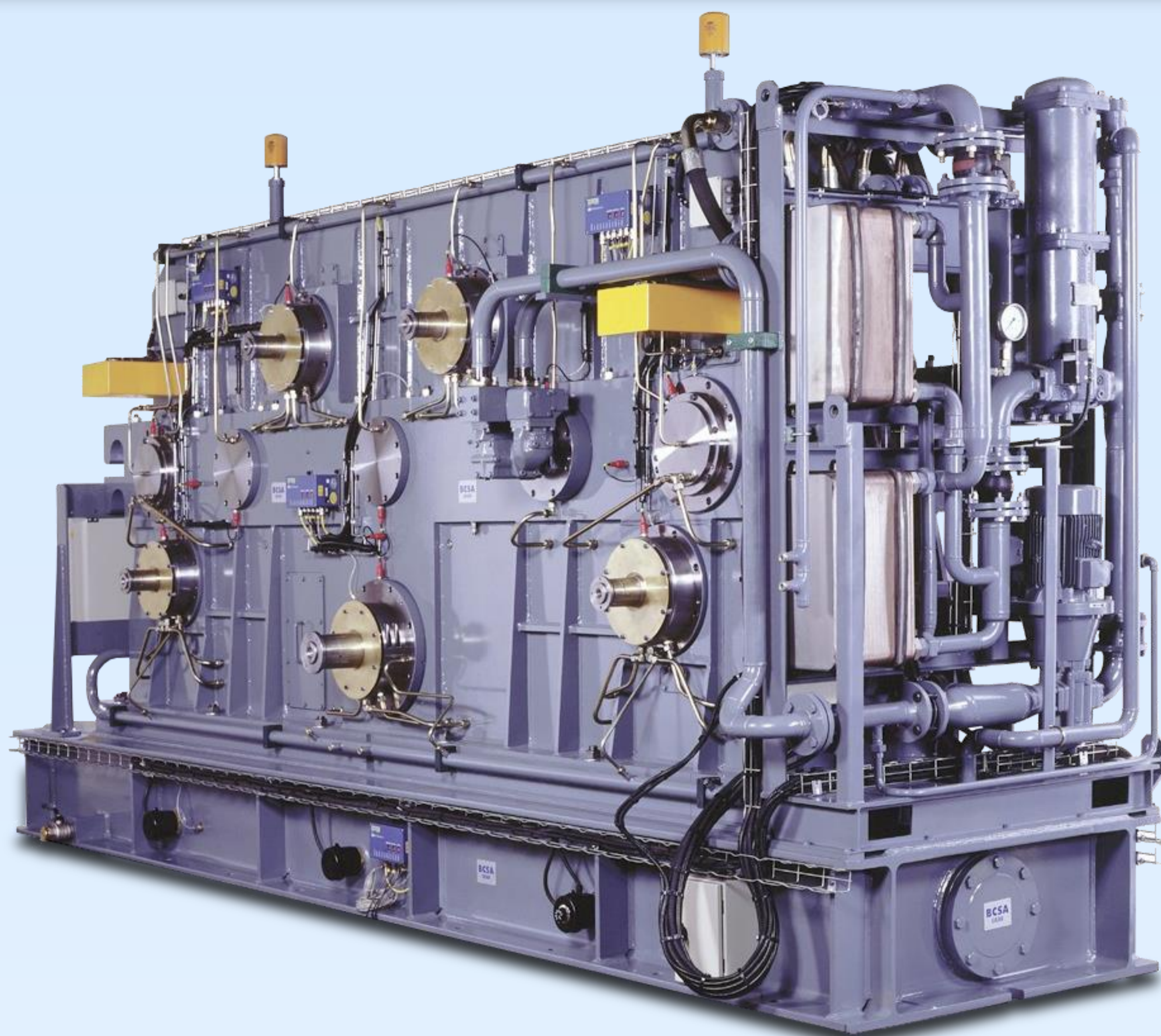


# Gearbox test bench for railway electric motors

Railways, TRAM, 9 outlets gearbox



- Possible use of 1 to 9 outlets
- Each line could be engage, locked or disengage by hydraulic actuators
- Lubrication unit with heaters embedded on the gearbox
- Mechanical driven oil pump for safety
- Vibration and temperature monitoring system



Puissance

**2 215 kW**

Power

Vitesse d'entrée

**1 500 rpm**

Input Speed

Vitesse de sortie (Normal/Survitesse)

**6 000/6 600 rpm**

Output Speed (Regular/Overspeed)

Couple max

**5 625 Nm**

Maximum Torque

Poids

**90 t**

Weight

KR 3899 et 4927



**Gearbox test bench for electric motors**  
*Bancs d'essais complet pour génératrices électriques*

SP 710/7

[www.bcsa.fr](http://www.bcsa.fr)

ISO 9001:2008  
BUREAU VERITAS  
Certification

